



---

Date: January 13, 2022

To: Board of Directors

From: Rick Benson, Interim General Manager

Subject: Review of Proposed Gore Lot (Kensington Corner) Improvement Project

---

**Recommendation:**

Approve, in concept, the proposal from the Kensington Improvement Committee (KIC) to improve the landscaping on the gore lot located at the intersection of Coventry Road and Arlington Avenue.

**Rationale for Recommendation:**

Members of the Kensington Improvement Committee have developed a proposal to make aesthetic improvements to the lot. They have enlisted the services of a professional landscape designer. It is their desire to add plants and trees and make improvements to the wooden steps. All of the work will be done professionally with funds raised by the KIC. Other than ongoing maintenance and water there are no anticipated district expenses.

In order to proceed, it is necessary for your Board to approve the project, in concept. If approved, detailed drawings and work plans will be submitted. In the meantime, the committee will be able to engage in fundraising activities to assure that the project can be accomplished.

Members of the committee are present and will be able to further explain the project and answer any of your questions.

**Background:**

At one time there were three large trees on the gore lot at the corner of Coventry Road and Arlington Avenue. The site was a meeting place which provided passersby with shade and a generally pleasant environment. Since the trees were removed, the corner is now somewhat barren and unattractive. Additionally, debris tends to gather on the lot.

**Fiscal Impact:**

The full cost of the improvements is being absorbed by KIC. The project has been reviewed by district staff and it is anticipated that maintenance and water cost will run approximately \$2,400 annually.

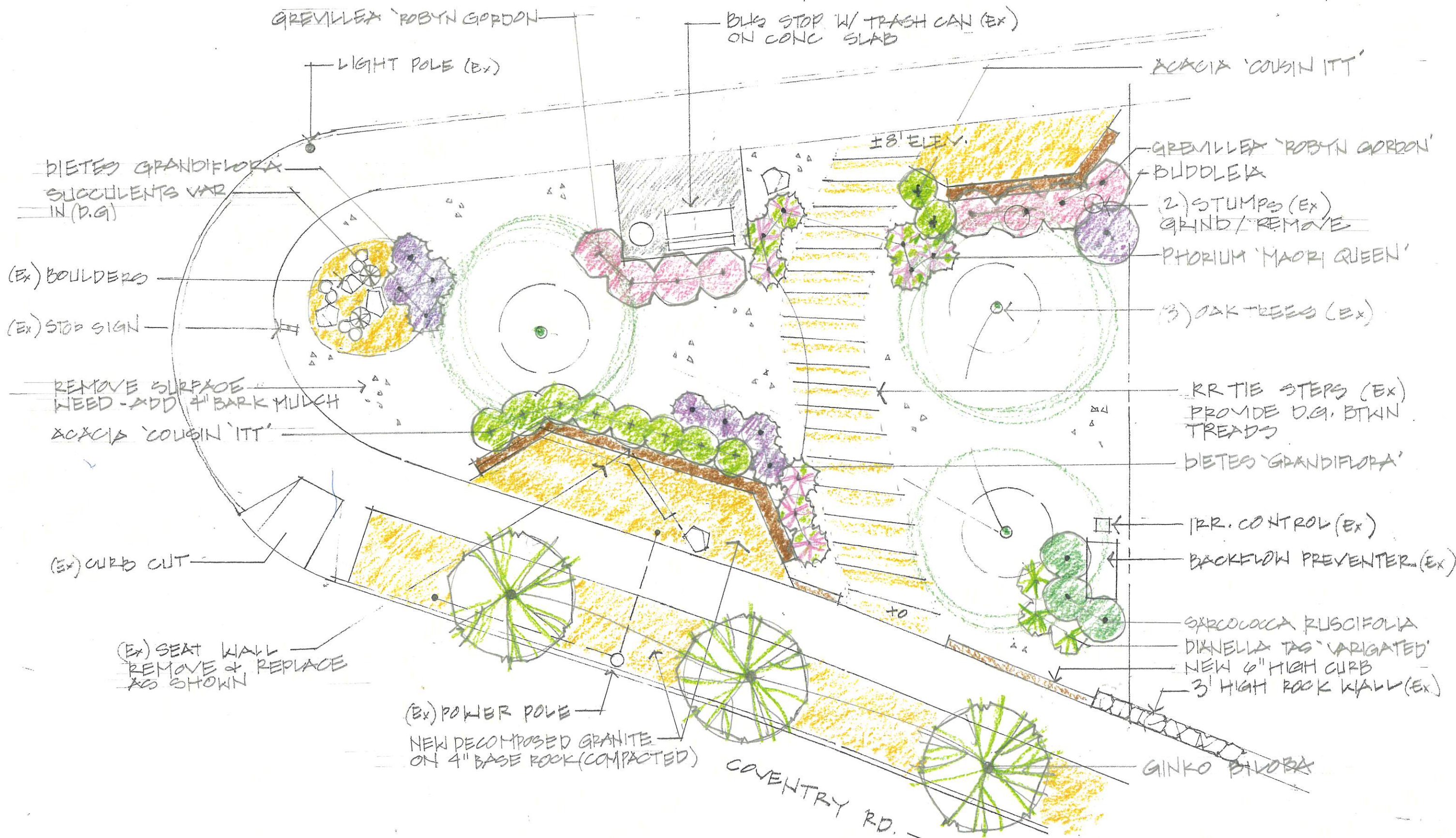
**Attachment:**

Conceptual drawings.



**GORE LOT - LANDSCAPE PLAN**  
 1/8" = 1'-0" (APPROX. NTS)

ARLINGTON AVE



GREVILLEA 'ROBYN GORDON'

BUS STOP W/ TRASH CAN (EX)  
ON CONC SLAB

LIGHT POLE (EX)

ACACIA 'COUSIN ITT'

±8' ELEV.

GREVILLEA 'ROBYN GORDON'

BUDDLEIA

(2) STUMPS (EX)  
GRIND/REMOVE

PHORUM 'MAORI QUEEN'

(3) OAK TREES (EX)

DIETES GRANDIFLORA  
SUCCULENTS VAR  
IN (D.G.)

(EX) BOULDERS

(EX) STOP SIGN

REMOVE SURFACE  
NEED - ADD 4" BARK MULCH  
ACACIA 'COUSIN ITT'

RR TIE STEPS (EX)  
PROVIDE D.G. BTWN  
TREADS

DIETES 'GRANDIFLORA'

IRR. CONTROL (EX)

BACKFLOW PREVENTER (EX)

(EX) CURB CUT

SARCOLOCCA RUSCIFOLIA  
DIXNELLA TAG 'VARIGATED'  
NEW 6" HIGH CURB  
3' HIGH ROCK WALL (EX)

(EX) SEAT WALL  
REMOVE & REPLACE  
AS SHOWN

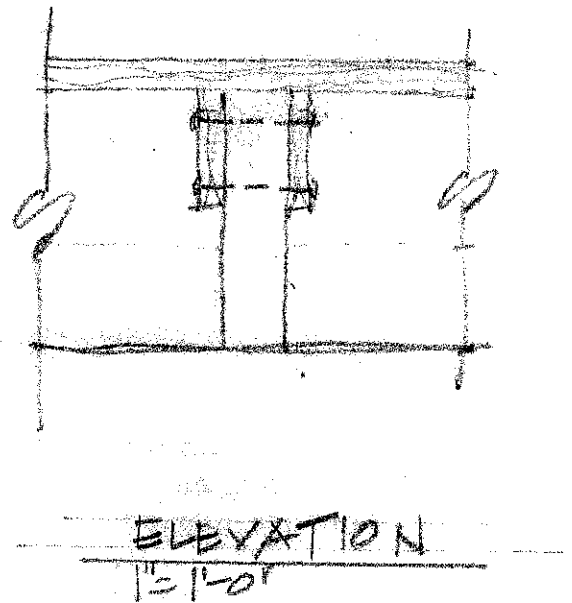
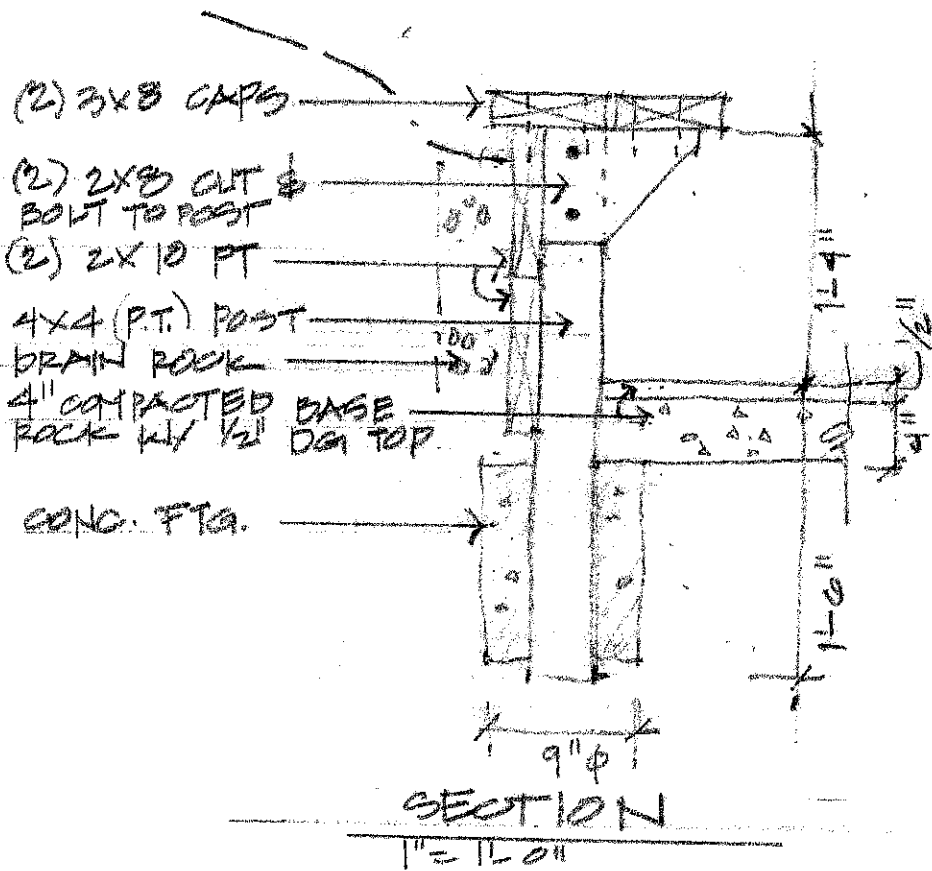
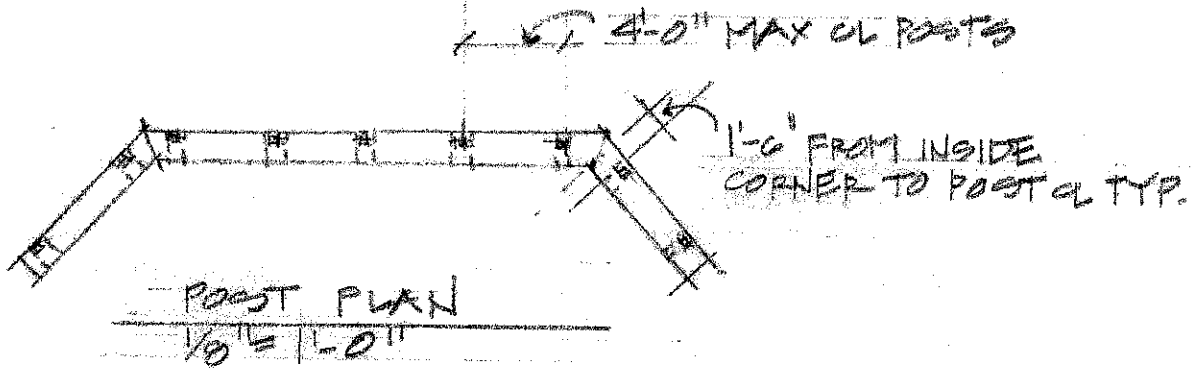
(EX) POWER POLE  
NEW DECOMPOSED GRANITE  
ON 4" BASE ROCK (COMPACTED)

GINKGO BILORBA

COVENTRY RD.



# RETAINING SEATWALL DETAILS



# RETAINING SEATWALL DETAILS

